



# Hampshire Scout Caving Club



Newsletter Autumn 2012



Sue Watson in Welsh's Green Swallett

HSCC web site URL : <http://hsccl.randomstuff.org.uk>

### **Newsletter Editor**

This edition edited by Ros White.  
Please send articles and photos for future  
Newsletters to: sally[at]randomstuff.org.uk

### **HSCC Officials :**

#### **Chairman: David Chadwick**

Home Tel: 01425 654025  
Mob: 07768 040088  
Address: TheRoost, Abbotswell Rd, Frogham,  
Fordingbridge SP6 2JA  
Email: David[at]theroost.Demon.co.uk

#### **Administrator: Sue Chase**

Home Tel: 02380 616056  
Mob: 07817 636655  
Address: 10, Drake Road, Bishopstoke, SO50 6EU  
Email: schasesusan[at]aol.com

#### **Equipment Warden: Phil Candy**

Home Tel: 02380 616056  
Mob: 07891 826195  
Address: 10, Drake Road, Bishopstoke,SO506EU

#### **Bookings Secretary : Andy Watson**

Home Tel: 01256 354510  
Mob: 07881 420048  
Email: lemoncandy[at]btinternet.com

#### **Membership Secretary: Sue Watson**

Home Tel: 01256 354510  
Mob: 07766 523694

### **Online Source of Information :**

**HSCC website:** [hsc.randomstuff.org.uk](http://hsc.randomstuff.org.uk)  
**UK Caving Forum:** [ukcaving.com/board/index.php](http://ukcaving.com/board/index.php)  
**Caving UK**(in association with Descent magazine):  
[www.caving.uk.com/Resources/Pages/frame.html](http://www.caving.uk.com/Resources/Pages/frame.html)  
**CSCC website:** [csc.org.uk/wiki/doku.php](http://csc.org.uk/wiki/doku.php)  
**Mendip Cave Map:** [www.ukcaves.co.uk/map](http://www.ukcaves.co.uk/map)  
mendip  
**Al Warild's caving book:** [cavediggers.com/vertical](http://cavediggers.com/vertical)

### **Caving Shops :**

**Cave Climb**—Cheddar —[www.caveclimb.com](http://www.caveclimb.com)  
**Hitch n Hike**—Bamford -[www.hitchnhike.co.uk](http://www.hitchnhike.co.uk)  
**Caving Supplies**—Buxton -[www.caving-supplies.co.uk](http://www.caving-supplies.co.uk)  
**Inglesport**—Ingleton -[www.inglesport.co.uk](http://www.inglesport.co.uk)  
**Bernies**—Ingleton -[www.berniescafe.co.uk](http://www.berniescafe.co.uk)  
**Starless River**—mobile -[www.starlessriver.com](http://www.starlessriver.com)  
**Excellent Stuff**—[www.excellentstuff.co.uk](http://www.excellentstuff.co.uk)  
**JumpSuits** [www.jumpsuits.randomstuff.org.uk](http://www.jumpsuits.randomstuff.org.uk)

### **Contents :**

- 1 HSCC Officials
- 1 Online sources of information
- 1 Caving Shops
- 2 HSCC Programme
- 2 Answers to Spring Quiz
- 3 HSCC News
- 4 A Welsh Wet Sunday in March by Andy & Sue Watson
- 5 Via Ferrata photos
- 6 A Trip to OFD I – or very nearly! by Ros White
- 7 HSCC club trip to Wales, May 2012 by Andy Watson
- 9 Photo Quiz

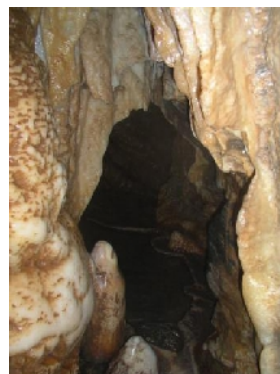
**HSCC Diary** (can be found at : <http://hsc.randomstuff.org.uk/diary/> )

<a href="#">AGM</a>	<b>Nov. 7, 2012 8 p.m.:</b> <i>AGM</i> - HSCC AGM at 12th Eastleigh
<a href="#">Caving - Wales</a>	<b>Nov. 24, 2012:</b> <i>Caving - Wales</i> - Weekend in Wales
<a href="#">Quiz</a>	<b>Dec. 5, 2012 8 p.m.:</b> <i>Quiz</i> - Annual Christmas Quiz
<a href="#">Caving - Mendip</a>	<b>Dec. 23, 2012 10 a.m.:</b> <i>Caving - Mendip</i> - Pre Christmas trip
<a href="#">Caving - Mendip</a>	<b>Jan. 26, 2013:</b> <i>Caving - Mendip</i> - Caving weekend staying at MNRS
<a href="#">SRT Practice</a>	<b>Feb. 6, 2013 8 p.m.:</b> <i>SRT Practice</i> - SRT Practice at Sandheath Scout Hut
<a href="#">Training</a>	<b>March 6, 2013 8 p.m.:</b> <i>Training</i> - General Training at 12th Eastleigh
<a href="#">Scout Caving Day</a>	<b>March 23, 2013 10 a.m.:</b> <i>Scout Caving Day</i> - leaders at MNRS
<a href="#">Scout Caving Day</a>	<b>March 24, 2013 10 a.m.:</b> <i>Scout Caving Day</i> - leaders based at MNRS
<a href="#">Talk</a>	<b>April 3, 2013 8 p.m.:</b> <i>Talk</i> - Talk at 12th Eastleigh
<a href="#">Devon Weekend</a>	<b>April 27, 2013:</b> Devon Caving Weekend
<a href="#">Egg Hunt</a>	<b>May 1, 2013:</b> <i>Egg Hunt</i> - Easter Egg Hunt - TBD
<a href="#">Scout Caving Day</a>	<b>May 18, 2013 10 a.m.:</b> <i>Scout Caving Day</i> - leaders based at MNRS
<a href="#">Scout Caving Day</a>	<b>May 19, 2013 10 a.m.:</b> <i>Scout Caving Day</i> - leaders based at MNRS
<a href="#">Derbs Long Weekend</a>	<b>May 25, 2013:</b> Derbs Long Weekend
<a href="#">BBQ at Andy's House</a>	<b>June 5, 2013 7 p.m.:</b> BBQ at Andy's House
<a href="#">Treasure Hunt</a>	<b>July 3, 2013 7:30 p.m.:</b> Treasure Hunt
<a href="#">Yorkshire Caving</a>	<b>Aug. 9, 2013:</b> <i>Yorkshire Caving</i> - 9-12 August
<a href="#">Caving - Mendip</a>	<b>Sept. 7, 2013:</b> <i>Caving - Mendip</i> - Caving weekend staying at MNRS
<a href="#">Training</a>	<b>Oct. 2, 2013 8 p.m.:</b> <i>Training</i> - General Training at 12th Eastleigh

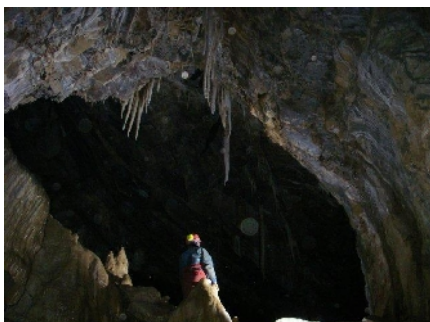
### Answers to Mendip Quiz from Spring Newsletter



*Hilliers, Fairy Quarry*



*Barnes Loop in Swildons Hole*



*Ros in Main Chamber, GB*



*Jacob in Singing River Mine*

## News:

Can anyone parking at **Masongill** (for Ireby etc) make sure they don't block the road or gates and also make sure they leave enough room to allow the farmer to turn round the corner in his tractor.

*Dear BCA Member Club,*

*The Council of Northern Caving Clubs has a long-standing agreement with the landowners of **Casterton Fell** that gives generous access arrangements to all BCA Member Clubs. Unfortunately on Saturday, 18th August, a day when none of the 5 available permits had been issued, the land agents visited the lane at Bull Pot Farm and to their amazement there were large numbers of cavers turning up and parking and a long procession then going caving on the fell. There are even two clubs with reports of their trips on the internet!*

*Unfortunately this is becoming a regular occurrence and, despite a number of requests to clubs over the last couple of years to respect the agreement, it seems many are not. Indeed, only 4 permits were issued for the whole of August and 5 have been issued for September. All this comes at a time when the whole access agreement is under review and pirating only serves to make negotiations that bit harder. The immediate result in the case above is that the CNCC Access Officer has been summoned to the Estate Office to explain what is being done to ensure improved compliance among cavers. We can only hope that it does not escalate any further in the longer term.*

*The various access agreements negotiated by Regions are based on the understanding that they will be respected. If necessary, BCA will take appropriate action against any Member or Members who act against the best interests of British cavers. We would, therefore, request that Clubs adhere to all access agreements, up-to-date details of which are available on the various Regional websites, or from the Regional Conservation & Access Officers.*

*Permits for Casterton Fell are readily available for any BCA Member Club by contacting Alan Speight by e-mail at: [alanmavisspeight\[at\]btinternet.com](mailto:alanmavisspeight[at]btinternet.com) or by post at: 8b, Springfield, Bentham, Lancaster LA2 7BA. Although ideally clubs will arrange their trips well in advance, last-minute permits are sometimes available, so please contact Alan and ask rather than just going caving.*

*BCA Executive (on behalf of BCA Council)      September 2012*

**Congratulations to Bryn** – he has gained a place at Oxford University, where he is now studying, in between kayaking, socialising etc.

**Jacob** going to Uganda to do some kayaking next Spring

**Amy** still seems to be enjoying herself touring the world.

Discovery in Mendip – Diggers in Reservoir Hole broke through into a vast underground chamber, named **The Frozen Deep**, a few weeks ago. A 100m long tunnel connects through the floor of a smaller chamber, down a pitch to the 30m high and 60m long chamber.

**Richard** (Gulvin) is now working all over the place.

**Sally & Andy** have moved. They are still in Otley, but have now bought a house. Good garage for caving gear too.

From **Gemma** : We've had a baby girl called Elspeth Isabelle Nye born on 25th July weighing 9lbs and 3 oz. She's absolutely gorgeous and we are enjoying the 'cuddlefest' that seems to be parenthood.



## A Welsh Wet Sunday in March by Andy & Sue Watson

On Sunday, March 4<sup>th</sup> 2012. I was planning a trip to Welsh's Green and so after lunch Sue and I drove from Stonehenge down to MNRS to deliver a Baby Burco boiler to Nick Powell who was still around from the AGM weekend. This we did in some fairly heavy rain which was blowing through from the south-west. After delivering the boiler we drove off towards Priddy and at the Hunters turned left, along the flat and down the hill and valley towards the cave and tried to drive up the lane adjacent to the house (with the dogs!) that leads to the cave which is a house and field access lane that leads into a bridleway past the cave, this was not very easy, even in my Suzuki Jimny 4x4, so I abandoned that idea and turned around in the gate of the house with the dogs barking around me and drove back out onto the road and went down and squeezed into the Water Works lay-by, making sure I did not block the gate. The sky had now cleared and we got changed by the car. Walking up the road and along the lane in the sunshine, as we walked down the bridleway we both commented how much water was flowing down the track and how brown it was. As we got closer to Welsh's Green Swallet (NGR ST54/5505.4773) it was apparent that there was more water around than we had anticipated and when we got to the Swallet Hole area one hole was completely full of water and most of the water from the track was running into the adjacent Wessex dig hole, which I think has been abandoned. We reached the entrance pitch into the cave (one ladder rigged off the scaffold bars) climbed down this taking the other ladder, rope and emergency kit with us and in the squeeze after the first pitch there was water coming out the size of the wall. This did not bode particularly well and we crawled along past brown foaming water and got to the second pitch noting there was a rather large amount of water going over the pitch, and 'in for a penny, in for a pound' I sent Sue down the second ladder first, as she climbed down she made some fairly serious yelping noises, probably due to the vast amount of water flowing down the back of her neck and on top of her head. I confess, I followed her down making similar brave grunting noises. The chill factor in the chamber was quite something with a swirling draft and water spray. Once down and along the crawl and short drop into the clay (blue lias) filled bedding plane I decided we would not go any further than the first aven although we had planned to go further. Water was pouring down the walls of the first aven. I had not seen the cave this wet before. After climbing up into the aven we turned around for our return journey and Sue went up the wet pitch first on the wrong side of the ladder with a rope wrapped around



her leg and making slightly more serious yelping noises.

After de-

rigging the pitch and dragging the heavy bag up the water filled crawl which was rather hard work as the water backed up on the bag, we got to the bottom of the main pitch rather sportingly tired and we were both glad to be out of the cave after two hours of wet and strenuous caving. Dave King was on call out duty and remember a good leader knows when to turn around. A sunny walk back to the car was very pleasant.



## Via Ferrata Photos from the Dolomites



Sally will do an article for the next newsletter about VF cowstails, their use & how they differ from caving ones.

## **A Trip to OFD I – or very nearly!** by Ros White

Recently access to OFD I changed, so that it was no longer necessary to have an OFDI "leader". We quickly organised to go there on our next club trip to South Wales. Inevitably the story of our last club trip there was re-told. Here it is, maybe just a little embellished, but that is allowed with the passage of 15 or more years!

Back in the dim and distant past, HSCC were staying in South Wales at Penwylt and had managed to find a leader to take a group of us through Cwm Dwr and into ODD I on the Sunday. Phil was the only one of us who had been there before as it always proved difficult to find a leader. I was keen and managed to secure a place. I can't remember who the other 2 places went to, but they are no longer cavers with HSCC.

All went well through Cwm Dwr and we found the Divers Pitch with little trouble. I was happy to climb up without a rope and soon we were all in the passages at the top. Our leader was not too sure of the way, so we did quite a few circles, each time returning to a draughty passage not far from Divers pitch. We decided it would be quicker if Phil and the leader split up and scouted around to find the way through, then came back for everyone.

I remember shivering (as usual) for what seemed like hours in that passage. My colleagues were not a lot warmer, and there was very little in the way of conversation. We just waited for the echoes of the "scouts" returning.

Phil eventually arrived back, fairly sure he had found the way through, with an awkward climb down. Our leader arrived back having done many more circles. We discussed what to do. The leader was now getting seriously worried as we were nearing our call out time (he was hyperventilating). I pointed out that there was nothing to worry about, at worst we could just go back out the way we had come in. As Phil was not 100% sure of the way on from the point he had reached it was decided that this was our best option. I was relieved to get moving and possibly warm up a little. Back down the climb was no problem. I expect we abseiled down a rope which was rigged for pull-through, but I really can't remember. I do remember that there is a short section with a very pathetic traverse that one of the party found intimidating. This slowed us down quite a lot, so by the time we got to the boulder choke we were on cue for being quite a lot overdue. We decided that as there was no problem and no-one was hurt, it was best for someone to sprint out and down to SWCC to prevent a call out. Phil was definitely the man for the job – sure of the way, fit and fast. I was not keen to stay with the others as I was getting cold with the slow pace, so I went with Phil, leaving the others to make their way out at their own pace. I set off following Phil. Phil dived down a hole, saying if I got left behind just follow the polished route, I could not possibly go wrong. Of one thing I was certain – I not only could, but would go wrong. With that one thought in my brain I focussed on the soles of Phil's boots and refused to let them out of sight. We shot out through Cwm Dwr Boulder Choke and more or less sprinted through the crawl (may be not quite sprinted, but it was certainly quick), up the passage to the entrance and ran down to take our card off the board – just before our call out time. We were relieved and quite pleased with ourselves, so got changed and waited for the others to appear. Time passed and every-so-often we would go look up the hill for weary cavers returning. The hill remained devoid of cavers. My lift home was ready and waiting and getting impatient. It was agreed I could go, Phil and another group from HSCC would wait for the others.

Apparently they were so long that Phil got changed back into caving gear and went back up to the cave. It seems they had got lost in the boulder choke.

I think we calculated that I was nearly home (in Hampshire) by the time they got back down to SWCC.

I don't think we ever got into OFD I proper, so it was great to be able to go there in May this year and go through from OFDI to Cwm Dwr one day and from Cwm Dwr to OFDI the next.

## HSCC members club trip to Wales on the weekend of 5<sup>th</sup> & 6<sup>th</sup> of May 2012

We stayed at Ystradgylais Scout hut in South Wales. Ten of us made our way there, including a broken Sue (recent operation) and Ralph (poorly shoulder) who went walking. Richard and Susan went cycling together on the Saturday. Caving on the Saturday Dave, Ros, Philip, Sue, Gavin and myself, went to Ogof Ffynon Ddu 1 to Cwm Dwr a new caving through trip for all of us, although Philip and Ros had done some of it 15 to 20 years ago. Route finding was fun, with various detours. The low bedding planes were not the way to go, the Pluto's Bath route which Philip fell in was also not the route we wanted, so he proceeded to fall in it twice plunging up to his neck in the cold water while Gavin laughed. We met a large CSS (Chelsea Speleological Society) group doing the OFD1 to OFD2 top entrance through trip, but we think they came out Cwm Dwr in the end with three of them backtracking after not being able to get through a calcite squeeze. David took us on a detour to OFD 1.5 which does not actually go anywhere, but is quite interesting, apart from the gritty, exposed 3.5 m climb up and down, this added about an hour to the trip. The Letterbox entry on a chain was a rather challenging manoeuvre and the abseil down the dry side of the 12 m Diver's Pitch was fun too, especially as we were not 100% sure of the route on. The connection to Cwm Dwr at Piccadilly with some lovely gour pools took us to some recognisable cave passage in Cwm Dwr where we had been on the Cwm Dwr to OFD2 trip (a regular annual outing for the club). The trip out through Cwm Dwr was tiring as it is mostly uphill and with several crawling passages prior to climbing up the vertical concrete entrance pipes. The trip took us five hours and we ended up as very tired Scout Cave leaders.



Sunday we decided to go on the same journey but the opposite way as the dry weather was still holding up. This trip was going to be from the Cwm Dwr entrance in the quarry, down the through trip to OFD1 and out of the bottom entrance which is just above the river in the valley. A prompt and speedy trip down through Cwm Dwr to Piccadilly and then through to Diver's Pitch just in



OFD1 where we took turns climbing up the wet and pretty pitch and it was pretty cold at the top in the wet spray and draft. I was up first and I looked for the way on, clearly it was not up to splashy steps that led to a very high and unclimbable vertical aven/pothole, it was the other way, the only other option, but surely not down that descending flow stone passage, it looks much too tight. While the others were climbing up Diver's Pitch with encouragement from David, I ventured down the tight triangular shaped flow stone passage and about three quarters of the way down I decided it felt too

tight and it could not be that way and I reversed out with some difficulty. But when we were all up the top of climb, it was clearly the only option regarding a route onwards, so I pushed on through the tight section, finally emerging through an tight awkward right hand turn though a calcite squeeze in to a low water worn passage. Philip followed headfirst and then David turned around as he was concerned that he may not get through and he came feet first making rather funny grunting noises and being encouraged by Philip, followed all of the others who came through headfirst. We found a way through a maze section around the top of Diver's Pitch to get to the opposite side, where we had abseiled down on the previous day. Onwards and upwards; By making our way up the short ascending rift and out of the Letterbox in reverse direction. So, lying on your back, flat out wriggling and reversing upslope with your head over a four metre drop, you lean out and grab the chain and then swing your legs out, whilst hanging on for dear life and trying to get a



foothold over to one side on a rock shelf. Quite a tricky manoeuvre going this way! Backtracking yesterday's route through the various passages to a 3 m climb up in the roof that was not very obvious. In due course the sump bypass streamway was reached and we climbed up into the Lowe's Passage using some fixed ropes (not very easy), this is a flood escape route that leads up to the Hairy Fairies, some high level traverses. After a short low wet crawl we climbed up to the left up over 100 feet on large rocks and came into some larger walking size taped passage that had some pretty formations. Unfortunately our cameras were right back at the climb into Lowe's Passage. Next time we will bring them up to this high level series. After easy walking and some simple climbing we got to a low level squeeze crawl in a bedding plane, where 5 out of 6 of us refused to go any further due to general fatigue. David, determined as ever, investigated the route for 5 minutes. The rest of us sat and waited, rested and got cold and in due course made our way back to the sump bypass streamway where David caught us up. As this passage joins the Main Stream Passage section the water depth increases and the deep water filled potholes with single scaffold bars to balance on and walkover are quite entertaining. The climb out point on the streamway was incorrectly assessed by Philip and so myself and Sue climbed out, finding ourselves in a blind oxbow passage. After we decided it



was the wrong route we needed help to get down the slippery flowstone slope with no footholds or handholds, much to everybody's amusement as they grabbed our feet as we slithered downwards. Further on, we found the correct passage and made our way up and out of the OFD1 bottom entrance. Overall, a pleasant trip of four and three quarter hours with all of us rather pleased we had found the way reasonably easily but we were also all rather weary. Once out we enjoyed a walk back up the steep hill to the South Wales Caving

Club cottage for hot showers and then back to the Ysradglylais Scout Hut for sausages and left over curry. A fun and sociable weekend.

Andy Watson

---

### **Boggarts Roaring Hole: My First "Not for the Faint-Hearted" Trip** by Sally White

The trip to the bottom of Boggarts Roaring Hole is one of 50 trips in the intimidatingly named "Not for the Faint-Hearted Book - 50 Harder Caving Trips in Yorkshire" book. I'd visited quite a few of the caves in the book, but had never fully completed any of the trips it outlined. Therefore, when it was decided we were doing all nine pitches in Boggarts Roaring Hole, I was slightly concerned. It was bitterly cold as we trekked up the hill and snow was falling, not exactly a welcoming start to the trip. However, as soon as we slipped down the entrance pitch it was a much more comfortable temperature. What I thought was the second pitch was actually counted as the second and third pitches in the guidebook. Soon enough we were well on our way to the bottom and I was enjoying the trip.

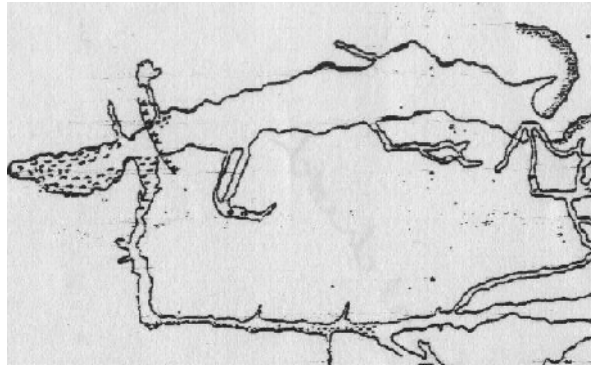
The main obstacles in the cave were several awkward pitch heads and tight slots. Being small, these created little difficulty for me, although one member of the trip didn't fit through a slot and had to turn back. I soon found myself at the bottom of the nine pitches.

The way out was harder work, but not as daunting as I had expected. The succession of small pitches meant there was not much waiting around and it was relatively dry, making it an excellent wet weather trip.

Can you identify these photos?



*a*



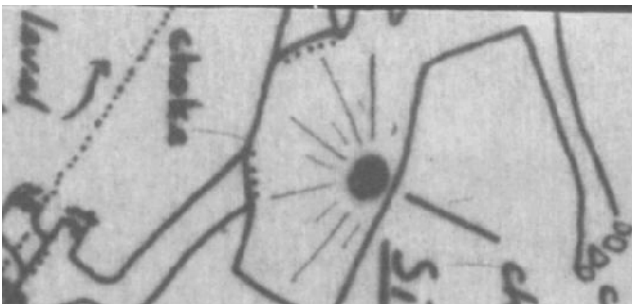
*b*



*c*



*d*



*e*



*f*



*g*



*h*